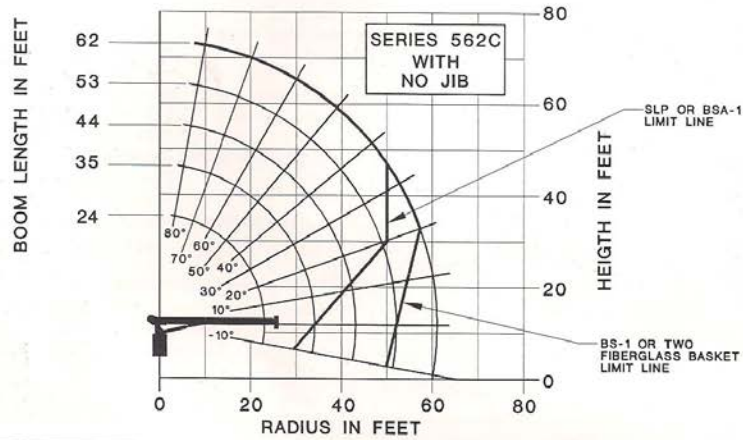


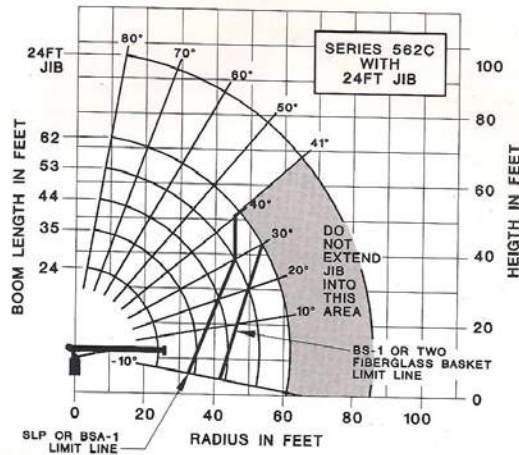
National Series 500C Load Rating Charts



LOAD RADIUS (FEET)	LOADED BOOM ANGLE	LOAD RATINGS										LOADLINE EQUIPMENT DEDUCT	
		24FT BOOM (LBS)	LOADED BOOM ANGLE	35FT BOOM (LBS)	LOADED BOOM ANGLE	44FT BOOM (LBS)	LOADED BOOM ANGLE	53FT BOOM (LBS)	LOADED BOOM ANGLE	62FT BOOM (LBS)			
4.5	80	30,000											
8	70	18,000	77.5	16,000									
10	65	15,000	73.5	13,300	77.5	12,500							
12	58.5	13,000	69.5	11,600	75	10,700	78.5	10,000					
14	53	11,300	66.5	10,300	72	9,500	76	8,800	78.5	8,400			
16	46.5	10,250	62	9,200	70	8,500	73.5	7,800	76	7,300			
20	28.5	8,450	54.5	7,700	63.5	7,000	69	6,350	72.5	6,100			
25			43	6,250	56	5,800	63.5	5,250	67	4,850			
30			29.5	4,950	47.5	4,700	58.5	4,400	62	4,200			
35					37	4,000	49.5	3,850	58.5	3,600			
40					23	3,350	42	3,350	51	3,200			
45							32	2,900	44	2,800			
50							18.5	2,400	37	2,450			
55									27	2,150			
60									13	1,650			
65													
70													
	0	5,600	0	3,200	0	2,200	0	1,500	0	1,150			

The capacities shown will be reduced when accessories are attached to the boom or loadline.

Note: Rated loads do not exceed 85% of the tipping load. Structural strength ratings in the chart above are shaded.



- NOTE:
1. OPERATE WITH JIB BY RADIUS, WHEN MAIN BOOM IS FULLY EXTENDED. IF NECESSARY INCREASE BOOM ANGLE TO MAINTAIN LOADED RADIUS.
 2. OPERATE WITH JIB BY BOOM ANGLE WHEN MAIN BOOM IS NOT FULLY EXTENDED. DO NOT EXCEED RATED JIB CAPACITIES AT ANY REDUCED BOOM LENGTHS.

JIB LOAD RATINGS		
LOAD RADIUS (FEET)	LOADED BOOM ANGLE	24FT JIB (LBS)
18	80	3,000
20	77	2,700
25	74	2,450
30	71	2,100
35	67	1,750
40	63	1,450
45	59	1,200
50	55	950
55	51	800
60	48	600
65	41	550

BOOM LOAD RATINGS											LOADLINE EQUIPMENT DEDUCT
LOAD RADIUS (FEET)	LOADED BOOM ANGLE	24FT BOOM (LBS)	LOADED BOOM ANGLE	35FT BOOM (LBS)	LOADED BOOM ANGLE	44FT BOOM (LBS)	LOADED BOOM ANGLE	53FT BOOM (LBS)	LOADED BOOM ANGLE	62FT BOOM (LBS)	
4.5	80.0	30,000									DOWNHAUL WEIGHT = 150 ONE SHEAVE BLOCK = 200 TWO SHEAVE BLOCK = 355
8	70.0	17,400	77.5	15,800							
10	65.0	14,400	73.5	12,900	77.5	12,100					
12	58.0	12,500	69.5	11,200	75.0	10,300	78.5	9,750			
14	53.0	10,800	66.5	9,900	72.0	9,400	76.0	8,500	76.5	8,100	
16	48.5	9,850	62.0	8,900	70.0	8,400	73.5	7,350	76.0	7,000	
20	29.0	8,000	54.5	7,400	63.5	6,650	69.0	6,050	72.5	5,850	
25			43.0	6,000	56.0	5,520	63.5	5,000	67.0	4,450	
30			28.5	4,700	47.5	4,350	56.5	4,200	62.0	3,900	
35					37.0	3,700	49.5	3,650	56.5	3,400	
40					23.0	3,100	42.0	3,200	51.0	3,000	
45							32.0	2,700	44.0	2,600	
50							18.5	2,200	37.0	2,250	
55									27.0	1,900	
60									13.0	1,450	
	0	5,200	0	3,000	0	2,000	0	1,300	0	900	

The capacities shown will be reduced when accessories are attached to the boom or loadline.

Note: Rated loads do not exceed 85% of the tipping load. Structural strength ratings in the chart above are shaded.