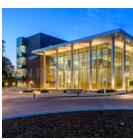


Articles in this newsletter



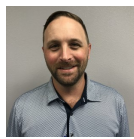
GLASS TECH



PROJECT HIGHLIGHT



CURRENT PROJECTS



EMPLOYEE SPOTLIGHT



FOCUS ON COMMUNITY



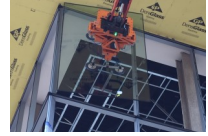
BIRTHDAYS & ANNIV.

BUSINESS NEWS

GLASS TECHNOLOGY



Eastex Glass continues to adapt to the ever-changing construction designs and needs of our projects. All glaziers are challenged with the manufacturer's increased size capabilities and an architect's/owner's need for larger glass. Glaziers are continually challenged to install and handle materials safely and quickly. We recently purchased a Smartlift 400 Sky Lifter which is an electrically power glass handling and lifting attachment for hydraulic machinery like reach forklifts, articulated wheel loaders, and cranes. With this attachment, we can safely handle glass weighing up to 881 lbs. Recently, it helped us streamline and safely install approx. 8,000 sqft. Of insulated glass with an average size of 65" x 125".

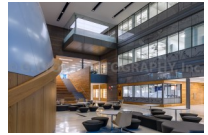


[\(BACK TO TOP\)](#)

AUGUST PROJECT HIGHLIGHT - Stephen F. Austin STEM Building



This months project spotlight is the Stephen F. Austin STEM Building. Eastex Glass was proud to partner with KDW Ltd. out of Nacogdoches. The project features over 25,000 square feet of Curtainwall and Storefront supplied by Kawneer. Combined with SolarBan 70XL and silk screened glass supplied by Tri-Star Glass Products, louvered sunshades provided by Airlite, and custom printed glass supplied by Goldray, this is truly a beautiful state of the art facility. This project also allowed us to utilize our Smartlift 400 Skyliifter mentioned in the article above.



[\(BACK TO TOP\)](#)

CURRENT PROJECTS



- Christus Trinity Mother Francis NICU Renovation, Tyler, TX
- SFASU STEM Building, Nacogdoches, TX - \$1.7M
- SHSU Arts Complex, Huntsville, TX - \$1.7M
- Alvin ISD Nelson Elementary School, Alvin, TX - \$315K
- Bay City Junior High, Bay City, TX - \$945K
- Jacksonville Tomato Bowl, Jacksonville, TX - \$190K
- Dollar General Distribution Center, Longview, TX - \$230K
- Lufkin State School, Lufkin, TX - \$20K
- Oak Hill Montessori School, Tyler, TX - \$100K

[\(BACK TO TOP\)](#)

PERSONAL FOCUS

EMPLOYEE SPOTLIGHT - Craig Hay, Vice President/Senior Estimator/PM



Craig has worked for Eastex Glass for 16 years. He serves as our Lead Estimator along with being a Project Manager. He graduated from Stephen F. Austin State University in 2004 with a Bachelors in Business Administration. He and his wife Lacy have been married for 15 years and have two daughters, Callie (9) and Harper (6).

[\(BACK TO TOP\)](#)

COMMUNITY INVOLVEMENT



- Smith County Peace Officers Association Luncheon, Tyler, TX
- Children's Advocacy Center benefit golf tournament, Lindale, TX

[\(BACK TO TOP\)](#)

BIRTHDAYS/ANNIVERSARIES



- None this month

[\(BACK TO TOP\)](#)

COMPANY INFORMATION



Michael Kenney
President/GM
936.569.8284
mkenney@eastexglass.com



James Murdock
Project Manager
936.371.9401
jmurdock@eastexglass.com



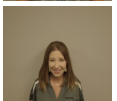
Jeff McQueen
Safety/Field Coordinator
936.553.9155
jmcqueen@eastexglass.com



Craig Hay
VP/PM/Senior Estimator
936.462.3900
chay@eastexglass.com



Jeremy Kenney
VP/Estimator
903.352.0386
jkenney@eastexglass.com



Olivia Lemons
Office Manager
936.569.8284
olemons@eastexglass.com

WEBSITE: WWW.EASTEXGLASS.COM
email: mkenney@eastexglass.com
P.O. Box 631883, Nacogdoches, TX 75963
Ph: 936.569.8284 Fax: 936.569.8391

Next edition: [SPECIALTY GLASS]

[\(BACK TO TOP\)](#)