

## WHY?

Clean

Affordable

Safe

Timely

It is the policy of Transportation Administration of Cleveland County, Inc. to ensure compliance with Title VI of the Civil Rights Act of 1964 which ensures no person in the United States shall, on the grounds of race, color, sex, age, national origin, or religion, be excluded from participation in, or be denied the benefits of, or be subjected to discrimination.

**Any person who believes he or she has been discriminated against or who has suggestions or complaints should contact:**

Transportation Administration of  
Cleveland County, Inc. (TACC)  
Executive Director  
PO Box 3210  
Shelby, NC 28151  
704-482-6704

### INCLEMENT WEATHER

TACC will limit or cancel scheduled trips when hazardous road conditions are present. Listen to WOHS radio station, WBTV(3) or WSOC(9) television stations, or check the website, [www.taccshelbync.com](http://www.taccshelbync.com), for delayed openings or closings.

*Alternative format of this brochure is available upon request.*

## The Way to Go!

Scheduled routes will run between 7:15 a.m. and 3:08p.m., Monday through Friday, except New Year's Day, Good Friday, Memorial Day, Fourth of July, Labor Day, Thanksgiving (2days), and Christmas (2 days). Call for details.

Vans are white with CCT logo and are wheelchair accessible. Vans are equipped with an audio and video surveillance recording system.

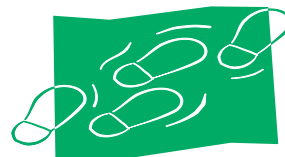
Stops are clearly marked with red and white bus stop signs posted along city streets.

Except for assistance animals, pets will not be allowed on the vans. Tobacco products, eating, drinking, and weapons are not permitted.

For safety's sake ... seat belts must be worn at all times and when appropriate, child safety seats and booster seats must be used in accordance with NC laws and the seats must meet Federal Motor Vehicle Safety Standards.

All stop locations, times and cost per trip are subject to change to improve service.

Route deviation of ¾ mile from nearest stop may be available upon request once disability certification is on file. Requests must be made during normal business hours and at least 24 hours in advance. One way route deviation charge is \$2.50. Only one deviation is available per day of operation.



**A Step in the right direction!**

Cleveland County Transit is funded by Cleveland County, the North Carolina Department of Transportation, and the Federal Transit Administration.



## Shelby Circulator Public Transportation



CCT is an equal opportunity employer.



Phone: 704-482-2311

Fax: 704-484-6954

Text Telephone: North Carolina 711

TDD/TTY: 1-800-735-2962

Voice: 1-800-735-8262

Email: [bdavistacc@bellsouth.net](mailto:bdavistacc@bellsouth.net)

Website: [www.taccshelbync.com](http://www.taccshelbync.com)

PO Box 3210

Shelby, North Carolina 28151

Revision Number 14  
Effective: February 2016

Bringing a  
Community  
Connection to  
Generations!

- 1 Buffalo/Julius
- 2 Buffalo/Lineberger
- 3 Carolina/Airline
- 4 Washington /Campbell St.
- 5 E. Warren St/Harris St.

- 6 Lamar St/Pinckney St/DSS
- 7 Marion St./Empl. Sec. Com
- 8 Marion St./Lineberger
- 9 Marion St./Highland Festival Shopping Center  
YMCA/Baptist Assoc./Wyke Rd. (Not on schedule call for pickup)
- 10 Cleveland County DSS/South Post Rd.
- 11 Cleveland County Health Dept.
- 12 Cleveland Community College/Fairgrounds/LeGrand Center
- 13 Marion St./Marion Ridge Apt.
- 14 Cleveland Mall-Shelby Savings Bank/Hwy 74
- 15 Big Lots Shopping Center/Hwy 74
- 16 Wal Mart-Front Entrance/Hwy 74



- 17 KMart-Front Entrance/Earl Rd.
- 18 Laurel Hill Apt.
- 19 Colonial Manor Apts./Earl Rd.
- 20 Lowes/Aldi/Goodwill/Walk-In Clinic
- 21 Interchange St./Sonic
- 22 Lafayette St./Family Car Wash
- 23 Lafayette St./Ramblewood
- 24 Charles Place Apt./Charles Rd./Dellinger Rd.
- 25 W. Warren St./Philbeck St./West Warren Manor
- 26 Cleveland Co Library/Shelby Park/Howie Dr.

- 27 Morgan St/Lions Sr. Village
- 28 Morgan St./Lee St.
- 29 Washington St./Hospital Emergency Room
- 30 First St./Crawford/Cleveland Center
- 31 Frederick St./Piedmont Ave.
- 32 T. R. Harris Dr./Senior Center
- 33 T. R. Harris Dr./Forest Glenn

For Information Call  
704-482-2311

See Route Time Schedule  
enclosed