

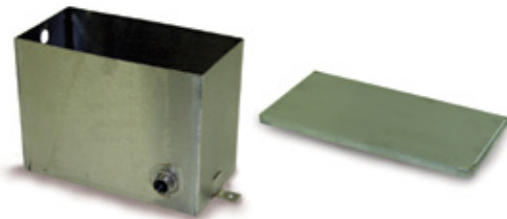
## Molded Plastic Float Tanks



- Molded polypropylene
- 7-liter size: 13" x 5" x 6"
- 1-gallon size: 10" x 5" x 8"
- No holes for max flexibility
- 1-gallon tank has tight-fitting lid, included
- 7-liter tank lid is snap-on and sold separately

Part #	Old No.	Description
8.710-026.0	343002	7-Liter Tank Only
8.710-027.0	343003	7-Liter Tank Lid
8.710-028.0	343004P	1-Gallon Tank w/ Lid

## Stainless-Steel Float Tank



- Fully welded and water tight
- 2.8-gallon capacity
- 12" x 9" x 6"
- 16 gauge #303 stainless-steel
- 1/2" full coupling (stainless-steel) inlet/outlet
- Convenient mounting tabs

Part #	Old No.	Description
8.710-029.0	343006	Stainless-Steel Float Tank
8.710-034.0	343016	Stainless-Steel Lid

## Float Tank

**LANDA®**



- 3.5 gallon capacity
- 22" x 13-1/2" x 5"
- Heavy 3/16" durable plastic
- Convenient mounting tabs
- Complete assemblies available, call with model number

Part #	Old No.	Description
9.802-084.0	2-01164	Universal Plastic Float Tank
8.912-233.0	95-07121207	Lid & Hinges

## 9-Gallon Diesel Fuel Tank



- Strap or bolt mount (4/5/16" inserts in bottom)
- Metal inset 3/8" inlet/return lines
- Black – crosslinked PE
- Vented fuel cap
- Filler neck doesn't extend beyond tank wall
- Compact size: 19-3/4" L x 12" W x 10-1/2" H

Part #	Old No.	Description
8.710-142.0	344735	9-Gallon Fuel Tank – Plastic

NOTE: Includes fuel cap.

## Fuel Tanks



8.751-293.0



8.751-294.0

- EPA/CARB-compliant
- Seamless one-piece construction of marine grade, UV-protected polyethylene
- Built-in reserve (when gauge reads "empty", tilt to access additional fuel)
- Two-stage click when closed fuel cap
- 90° fuel withdrawal fitting
- Easy-to-read sight gauge
- Four shapes and capacities from which to choose

Part #	Gallons	Length	Width	Height
8.751-294.0	6	21.18"	13.5"	10"
8.751-296.0	12	20.375"	13.75"	14.75"
8.751-293.0	12	24.25"	18"	11"

## Landa Fuel Tanks

**LANDA®**



8.706-603.0



8.706-604.0

- International color coded for gas (red) and diesel (green)
- Rugged fill neck cap with vent
- Semi transparent shows fuel level
- Heavy-duty 14 gauge

Part #	Old No.	Description
8.706-603.0	2-011501	10 gal Poly, Yellow, Skids
8.706-604.0	2-011502	5 gal Poly, Red, Skids
8.706-606.0	2-011503	10 gal Poly, Red, SGHW
8.706-626.0	2-01154	6 gal Poly, Yellow, VHW/MVP/MVC
8.706-627.0	2-011541	6 gal Poly, Red, MPG

NOTE: Cap not included with tank

## Fuel Caps



- For gas or diesel fuel tanks
- Fits standard 2-1/4" fuel necks

Part #	Old No.	Description
8.710-137.0	344725	Fuel Cap
8.701-700.0	091520	Fuel Cap with Gauge 10"

## Battery Boxes with Cover, Marine Style

Protect batteries on pressure washers, boats or other industrial equipment.



- Attractive molded polypropylene
- Complete with hold-down cleats and strap for cover

Small:  
8-1/2" L x 6" W x 8-1/2" H

Large:  
11-1/4" L x 7-3/4" W x 10-3/4" H

Part #	Old No.	Description
9.802-090.0	306625	Small Box
9.802-075.0	306627	Large Box

## Plastic Dip Tube Assembly **LANDA®**



- New style plastic dip tubes
- Rubber bushing seal ordered separately

Part #	Old No.	Description
8.706-494.0	2-010062	MPG, VHW, MVP, HS, 7.5"
8.706-495.0	2-010063	PHWS, OHW, HOT, 12"
8.706-496.0	2-010064	Skids, 17.75"
9.802-053.0	2-010061	Rubber bushing

## Copper Fuel Dip Tubes **LANDA®**



"Old Style"

Part #	Old No.	Description	Material
8.706-957.0	2-10881	PHW Fuel, 12"	Brass
8.902-250.0	2-10882	HS Fuel, 6.5"	Brass
8.902-251.0	2-10883	VHW Fuel, 7.5"	Brass
8.902-252.0	2-10884	MHP Fuel, 17"	Brass

## Complete Wheels



8.711-901.0

9.802-270.0

9.802-271.0

8.712-762.0

- High-quality pneumatic, and semi pneumatic
- Fits 5/8" shaft

Part #	Old No.	Description
8.711-901.0	4-0304	10" Mag
9.802-270.0	4-0303	10" Steel Rim w/ Tube
9.802-271.0	4-0307	13" Steel Rim
8.712-762.0	480115	10" White steel rim, 3/4" Hub Tubeless
8.711-905.0	4-03071	6" Steel Rim Foam Filled
8.711-921.0		6" Tube Only
8.712-767.0		10" Tube Only
9.802-274.0		10" x 2-3/4" Hard Rubber Wheel
8.711-908.0		3" Gray Caster Wheel



### Interchangeable Bearings

Part #	Old No.	Description
8.700-484.0	076504	5/8" Bore Bearing
8.700-486.0	076505	3/4" Bore Bearing
8.700-485.0	076504P	5/8" Nylon Bearing

### Hub Caps and Collars

Part #	Old No.	Description
8.700-183.0	071625	3/4" Hub cap
8.700-184.0	071627	5/8" Hub cap
9.802-782.0		5/8" Bore Shaft Collar

## Miscellaneous Parts

Part #	Description
8.719-064.0	Chassis Knob 5/16" Thread, Black
9.802-066.0	Soft Rubber Foot Pad
8.932-992.0	Vibration Isolator 3/8"

## Landa Fuel Caps **LANDA®**



9.802-089.0

9.802-082.0

8.706-629.0, 8.706-637.0

Part #	Old No.	Description
9.802-089.0	2-01167	Threaded Cap (Fits All Poly Fuel Tanks)
8.706-629.0	2-01157	14" w/ Fuel Gauge, PHW & PGHW Metal Tanks
8.706-637.0	2-01158	18" w/ Fuel Gauge, SGHW Metal Tanks
9.802-082.0	2-01153	Plastic, Twist Lock, PHW Metal Tanks